

# TAUPŌ ART TRAIL

Guide with maps

QUEEN'S BIRTHDAY WEEKEND

2-5 JUNE 2017



TAUPŌ ART  
CONNECTION

[www.taupoartconnection.org.nz](http://www.taupoartconnection.org.nz)

## Take an art-inspired journey around the beautiful Lake Taupō District...

Visit over 20 Artists ready to share their artwork & studios with you!

**Open Friday to Monday, 10am to 4pm.**

*Unless Artist has stated otherwise in this guide*

Come visit us. Follow the maps included in this guide, or scan the QR code for a more detailed map view.

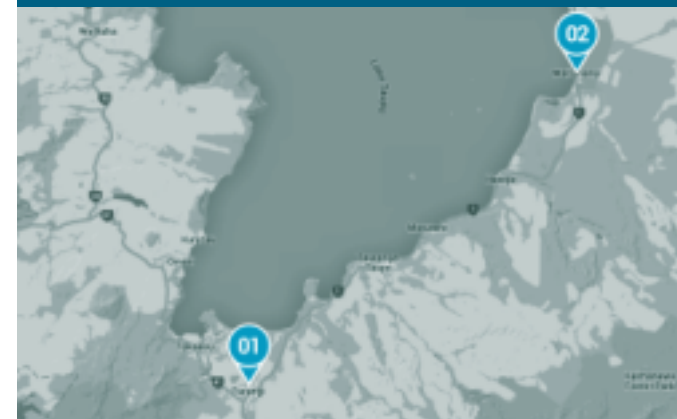


a. TURANGI & WAITAHANUI	ARTISTS 01 - 02
b. 2 MILE BAY & RICHMOND HEIGHTS	ARTISTS 03 - 05
c. HILLTOP & TAUHARA	ARTISTS 06 - 12
d. TAUPŌ CBD	ARTISTS 13 - 18
e. ACACIA BAY	ARTISTS 19 - 20
f. WAIRAKEI, KINLOCH & ORUANUI	ARTISTS 21 - 23
g. ONLINE / OTHER LISTINGS	ARTISTS 24 - 25

*All maps courtesy of Google My Maps*

### a. TURANGI & WAITAHANUI

ARTISTS 01 - 02



#### 01 PIHANGA GALLERY

A cooperative run by artists who live in the beautiful Turangi Tongariro region. A place where art lovers can view a diverse range of artwork unique to the Central Plateau.

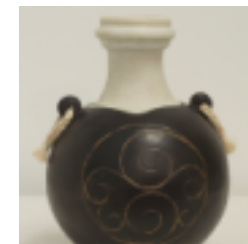
**Turangi Town Centre**

**P:** 027 262 8688

**E:** [pihangaart@hotmail.com](mailto:pihangaart@hotmail.com)

**W:** [www.facebook.com/pihangagallery](http://www.facebook.com/pihangagallery)

**Open:** Mon - Fri 10am - 4pm, Sat 9am - 3pm,  
Sun 11am - 2pm



#### 02 WILDWOOD GALLERY

Take a 12-minute drive down to **Wildwood Gallery's Winter Warm-up!** We'll fire up the brazier and on Sat/Sun afternoons you can enjoy a cup of warm "glugg" while browsing the gallery to view our latest creations. Art demonstrations by Robbie and Sue Graham, woodturning, paintings, sculpture, photography and commissions available.

**141 SH1 Waitahanui, RD2 Taupō, 3378**

**P:** 07 377 0469, 027 237 8173

**E:** [robbie@wildwoodgallery.co.nz](mailto:robbie@wildwoodgallery.co.nz)

**W:** [www.wildwoodgallery.co.nz](http://www.wildwoodgallery.co.nz)

**Open:** 10am - 5pm



**b. 2 MILE BAY & RICHMOND HEIGHTS**

ARTISTS 03 - 05

**03 JENNIFER COOK-BATTERSBY**

Jennifer welcomes you to view her current art works in her home-based studio. Her style is realist and semi-abstract in oils and mixed media. Jennifer has worked as a full time artist for the past 15 years. She is a Galleried artist and exhibits regularly.

**29 Otupai Street, Taupō**

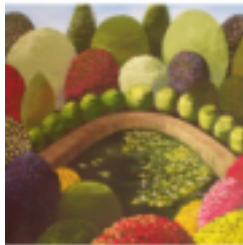
**P:** 027 497 7669  
**E:** [jennifer.cook-battersby@xtra.co.nz](mailto:jennifer.cook-battersby@xtra.co.nz)  
**W:** [www.jcbfineartist.com](http://www.jcbfineartist.com)

**04 JUDITH ALEXANDER-GRAHAM**

Landscapes and scenes of different places inspire me. Recreating these images on canvas invokes strong memories for me. My scenes of sacred places depict their survival and continuing significance in today's works. My journey is an ongoing process of discovering and developing my own style.

**21 Hammersmith Street, Taupō**

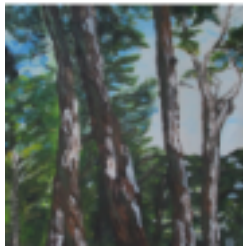
**P:** 027 494 1218  
**E:** [judyalgr@gmail.com](mailto:judyalgr@gmail.com)  
**W:** [www.taupoartconnection.org.nz/artists](http://www.taupoartconnection.org.nz/artists)

**05 LORRAINE CHOLMONDELEY-SMITH**

Embracing Impressionism, together with using the colours and shapes of nature, has given me an unsophisticated style I feel relaxed working with. My work has sold at exhibitions and from these shows I have also received commissions.

**21 Hammersmith Street, Taupō**

**P:** 021 644 666  
**E:** [warrenlorraine@vodafone.co.nz](mailto:warrenlorraine@vodafone.co.nz)  
**W:** [www.taupoartconnection.org.nz/artists](http://www.taupoartconnection.org.nz/artists)

**c. HILLTOP & TAUHARA**

ARTISTS 06 - 12

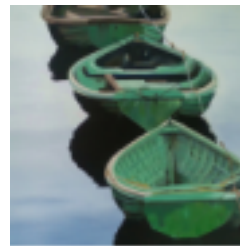
**06 ANTOINETTE BECK**

-STUDIO 57-

Antoinette has worked as an interior Designer for many years and recently opened Studio57 to combine her passion for design and art. She paints in oils and recycled timber, taking inspiration from both the natural and manmade environment. Her recent work is a study of boats and water.

**57 Miro Street, Taupō**

**P:** 027 478 5959  
**E:** [nzbecks@gmail.com](mailto:nzbecks@gmail.com)  
**W:** [www.taupoartconnection.org.nz/artists](http://www.taupoartconnection.org.nz/artists)

**07 MAGGIE DAWSON**

-STUDIO 92-

Nature continues to inspire my work along with the challenge of participation in national and international printmaking events. During the weekend visitors may join in with a print collaboration printing moths for an exhibition in America. Sharing the excitement of printmaking brings much joy.

**92 Taharepa Road, Taupō**

**P:** 07 377 522  
**E:** [maggie.dawson1@gmail.com](mailto:maggie.dawson1@gmail.com)  
**W:** [www.taupoartconnection.org.nz/artists](http://www.taupoartconnection.org.nz/artists)

**08 HEATHER MACDONALD**

-STUDIO 92-

'Art meets angling' could describe Heather's current printmaking. Her pottery and prints are inspired by the forms, colours and spirit of the Central Plateau. She endeavours to juxtapose ideas and images in ways that challenge and delight.

**92 Taharepa Road, Taupō**

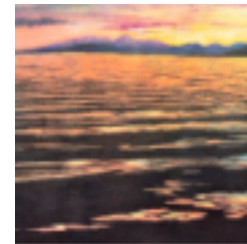
**P:** 021 289 2314  
**E:** [heather.macdonald@paradise.net.nz](mailto:heather.macdonald@paradise.net.nz)  
**W:** [www.taupoartconnection.org.nz/artists](http://www.taupoartconnection.org.nz/artists)

**09 SALLY-ANN DAVIES**

Sally has a passion for printmaking and portrays our local environment by exploring different printing techniques e.g. monoprinting, etching and woodblocks and linocuts. Ask about her children and adult workshops.

**4 Sunset Street, Taupō**

**P:** 07 376 9972 / 027 686 9993  
**W:** [www.sallyanndavies.com](http://www.sallyanndavies.com)  
[www.facebook.com/sallyanndaviesart](http://www.facebook.com/sallyanndaviesart)  
**Open:** Sat/Sun/Mon. Closed Friday

**10 SUZIE KUPER**

-MIXED MEDIA ARTIST-

Combining her love of clay with traditional and experimental printmaking techniques, Suzie presents a series of work that focuses on the strong women in our lives. Ancestors, family, friends and famous faces can all be found in this exploration of the freedom to choose, or not, as the case may be.

**22 Puriri Street, Hilltop, Taupō**

**P:** 07 378 9373  
**E:** [kuperjs@xtra.co.nz](mailto:kuperjs@xtra.co.nz)  
**W:** [www.taupoartconnection.org.nz/artists](http://www.taupoartconnection.org.nz/artists)  
[www.facebook.com/suziekuperdecorativearts](http://www.facebook.com/suziekuperdecorativearts)

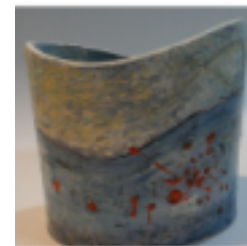
**11 JACQUIE GOLDSMITH**

-THE MALLARDS STUDIO &amp; GALLERY-

Jacqui admits to being fascinated by the effects of working with fire and clay. "I love the element of surprise that can emerge from the process." Her ceramic hand-built pieces are often enhanced by the 'Raku' firing technique. Compelled to explore and push boundaries, Jacqui's work continues to evolve and excite.

**64 Pataka Road, Taupō**

**W:** [www.taupoartconnection.org.nz/artists](http://www.taupoartconnection.org.nz/artists)

**12 CAROLE CORNES**

-THE MALLARDS STUDIO &amp; GALLERY-

Carole specialises in fine detailed botanical drawings and paintings. Native plants are a particular speciality, having completed a two-year botanical distance-learning course run by the Society of Botanical Artists based in London and gaining a prestigious Merit award.

**64 Pataka Road, Taupō**

**P:** 07 378 0412  
**W:** [www.taupoartconnection.org.nz/artists](http://www.taupoartconnection.org.nz/artists)  
[www.facebook.com/TheMallardsStudioGallery](http://www.facebook.com/TheMallardsStudioGallery)



**Taupō Art Connection Annual Exhibition**  
*Beautiful Marks* at Taupō Museum  
 16 December 2017 - 29 January 2018



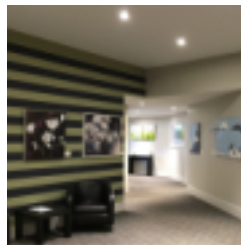
## d. TAUPŌ CBD

ARTISTS 13 - 18



## 13 THE ART GALLERY @SUNCOURT HOTEL

We are exhibiting three artists at present; Erin McRobbie, Mary Sharples and Chrissy Simmen. Each has their own wonderfully unique styles, producing quality artworks in watercolour, acrylic and oil mediums, taking inspiration from the Taupō beauty that surrounds us. Enjoy a coffee or wine from our Bistro while you study the art.

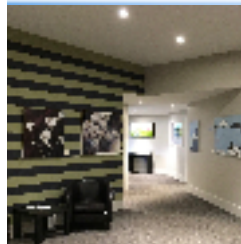


**Suncourt Hotel & Conference Centre, 14 Northcroft Street, Taupō**

**P:** 021 484 349 (Chrissy)  
**E:** chrissy@funnell.nz  
**Open:** 7.30am - 9pm, 7 days

## 14 TAUPŌ MUSEUM & ART GALLERY

Taupō Museum & Art Gallery showcases a diverse range of local and touring exhibitions. This Queen's Birthday Weekend we have touring exhibition 'Crescent Moon', photography by Ans Westra and local exhibition 'Heirlooms' by Taupō Embroiderers Guild.



**4 Story Place, Taupō**

**P:** 07 376 0414  
**Open:** 10am - 4.30pm, 7 days  
Locals free. Visitors Adult \$5,  
Seniors/Students \$3, Children free

## 15 DIDI CHAPMAN

-ACTIVE ARTS-

Didi is using Mishima techniques to create her drawings in clay. She is also attracted to drawing the natural environment using Indian ink. Ask about her pottery classes.

**Active Arts, 5 Redoubt St. (opp. Countdown) Taupō**

**P:** 021 996 014  
**E:** info@kiwiartgallery.co.nz  
**W:** www.kiwiartgallery.co.nz/artist/didi



## 16 NANCY TSCHETNER

-ACTIVE ARTS-

Inspired by Nature, Nancy specializes in sand paintings & portraits. The majority of her work is solely created with over 40 shades of natural sand. Nancy's unique style gives her the ability to bring any subject to life. She welcomes commissions & uses acrylic paint for special color.



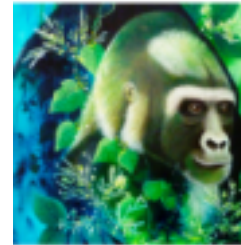
**Active Arts, 5 Redoubt St. (opp. Countdown) Taupō**

**P:** 0212923899  
**E:** info@nzsandart.co.nz  
**W:** www.nzsandart.co.nz  
www.facebook.com/NZSANDART

## 17 JANE FOGDEN

-ACTIVE ARTS-

Jane is an artist who is inspired by vibrant colours. Her unique artwork is mainly inspired by both African and New Zealand flora and fauna. She works in acrylics using acrylic inks for her backgrounds, allowing her imagination to flow and create dynamic interpretations of her own perception of nature.



**Active Arts, 5 Redoubt St. (opp. Countdown) Taupō**

**P:** 07 377 6274  
**E:** jifoggy@xtra.co.nz  
**W:** www.taupoartconnection.org.nz/artists

## 18 DIANE GRANT

-ACTIVE ARTS-

My inspiration comes from our amazing environment in Taupō and the colours of nature. Though my first love is watercolours, I have also been experimenting with acrylics and oils - and enjoying the results. My study through The Learning Connexion has helped develop my skills and widen my interests to other media.



**Active Arts, 5 Redoubt St. (opp. Countdown) Taupō**

**P:** 073789162  
**W:** www.taupoartconnection.org.nz/artists

## e. ACACIA BAY

ARTISTS 19 - 20



## 19 BARBARA VAN DEN BROEK, DONNA STEDMAN, SUE PEARCE

We've always had a passion for art. Painting with friends is what we love most, getting out and about, covering a variety of subjects, focusing mainly on oils. We constantly look to improve our art by exploring new techniques with fresh ideas. Come and see our work from this last year.



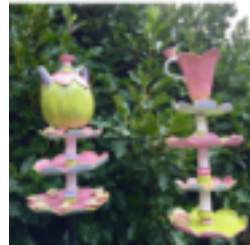
**15 Loch Views Rd, Acacia Bay, Taupō**  
**(Parking up Driveway)**

**P:** 0274 713426  
**Open:** Sat/Sun/Mon 10am-4pm. Friday closed.

## 20 JUDI BRENNAN

-L'ARTÉ-

Judi's colourful ceramic sculptures are all handmade in her workshop attached to her Gallery in the beautiful, art filled gardens at L'Arté Café.



**255 Mapara Road, Acacia Bay, Taupō**

**P:** 07 378 2962  
**E:** us@larte.co.nz  
**W:** www.larte.co.nz

# Be sure to check out

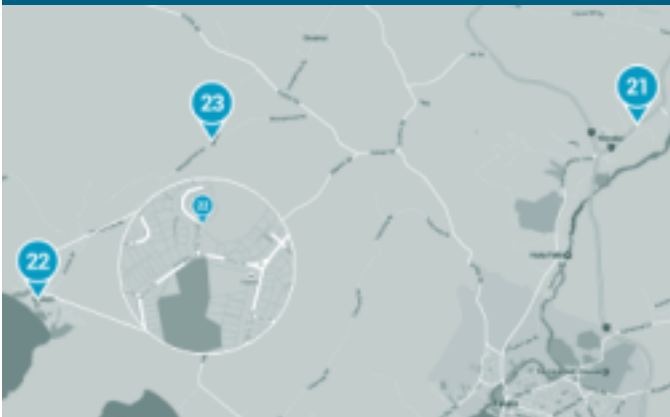
## the Art Hub during Taupō Winter Festival

refer to our website for more details

# www.taupoartconnection.org.nz



**TAUPŌ**  
**WINTER FESTIVAL**  
*the heart of winter*



## 21 LAVA GLASS

Lava Glass is a gallery, studio, sculpture garden and cafe complex offering a unique and fascinating window into the world of glass blowing. Watch Lynden Over, founder and resident artist, at work in the studio, view pieces in the gallery, and dine in our café before walking through the nationally-recognized Sculpture Garden.

165 State Highway 5, Wairakei, Taupō

P: 07 374 8400

E: [info@lavaglass.nz](mailto:info@lavaglass.nz)

W: [www.lavaglass.co.nz](http://www.lavaglass.co.nz)

Open: 7 days, 9am - 5pm



## 22 JO RANKIN

-STUDIO 40-

Original, unique, semi abstract paintings in acrylic and acrylic inks, Jo's paintings vary with texture, brush and palette knife and there is always a surprise for the viewer. From the corner of a picturesque garden Studio 40 enjoys lovely views of Kinloch's surrounding hills. Commissions welcome. Quality framing on site.

40 Lakemere Way, Kinloch, Taupō

P: 07 217 0330 / 027 462 7832

W: [www.studio40.nz](http://www.studio40.nz)

[www.facebook.com/Studio40Kinloch](https://www.facebook.com/Studio40Kinloch)



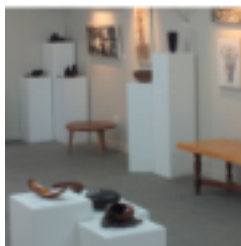
## 23 3ART GALLERY

3Art Gallery's three resident artists are passionate about nature, the environment and where possible, recycled materials. Chris works with wood, commission work and teaches. Avid woodworker Troy is a very creative artist. Julz makes Chainmaille jewellery from bare wire to finished pieces. Visiting artists display paintings, drawings, photography and sculptures.

299 Whangamata Road, Kinloch

P: 07 378 7703

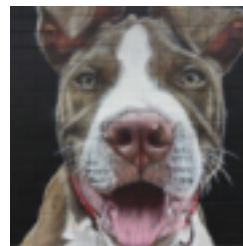
W: [www.woodysplace.co.nz](http://www.woodysplace.co.nz)



## 24 GRAFFIATO STREET ART

Graffiato is Taupo's street art festival held every Labour weekend where New Zealand's best and acclaimed street artists paint walls within the Taupo town centre. Walk the streets of the central business district, see the extensive range of artworks, and check out the iSite and [www.greatlaketaupo.com/graffiato](http://www.greatlaketaupo.com/graffiato) for artist information and maps.

W: [www.greatlaketaupo.com/graffiato](http://www.greatlaketaupo.com/graffiato)



## 25 TAUPŌ SCULPTURE TRUST

The Taupo Sculpture Trust is dedicated to providing contemporary sculpture for public spaces around Lake Taupo, and to support arts in New Zealand. We aim to develop community pride through sculpture while fostering a strong sense of local identity. The Trust relies on grants, donations and sponsorship from supporters for its revenue.

E: [tsttaupo@gmail.com](mailto:tsttaupo@gmail.com)



- NOTES -

---

---

---

---

---

---

---

---

# TAUPŌ ART CONNECTION

Taupō Art Connection is an inclusive group bringing together visual artists in the Taupō region.

The group represents a commitment to creating a vibrant, active arts community that benefits artists and ensures a fulfilling experience for visitors to the region.

From the professional to the enthusiastic hobbyist, the group provides the opportunity for artists and art lovers to socialise, network and encourage each other creatively.

Taupō Art Connection meets on the first Wednesday each month.

Taupo District  
**creative**  
COMMUNITIES *nz*



Visit our website  
[TaupoArtConnection.org.nz](http://TaupoArtConnection.org.nz)



[www.facebook.com/TaupoArtConnection](https://www.facebook.com/TaupoArtConnection)

**!** Please donate...



We'd appreciate your help with the production of this brochure.  
Gold coin donations can be made at the artists' studios/galleries.